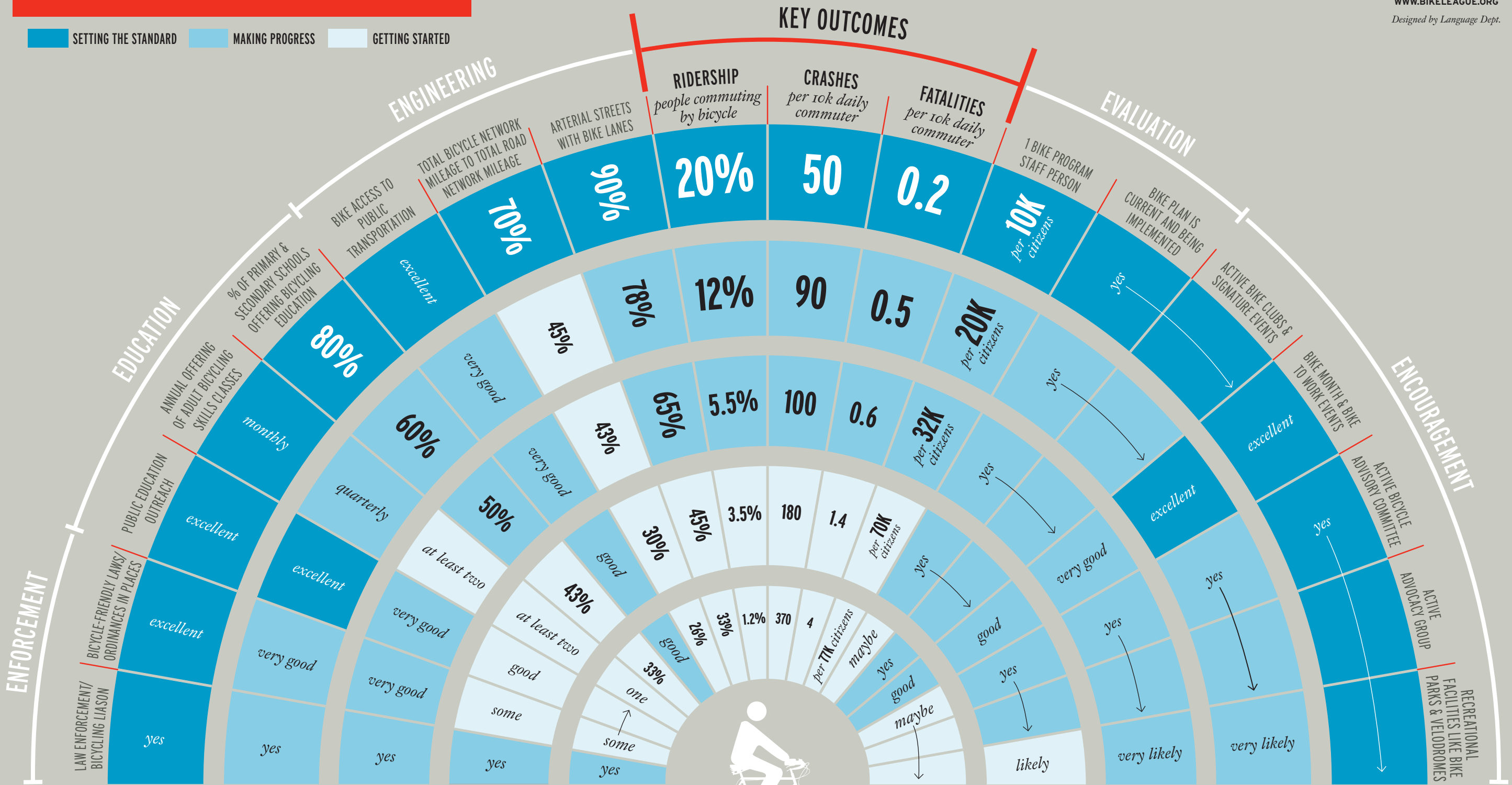


THE BUILDING BLOCKS OF A BICYCLE FRIENDLY COMMUNITY

produced by
THE LEAGUE
 OF AMERICAN BICYCLISTS
 WWW.BIKELEAGUE.ORG
 Designed by Language Dept.



DIAMOND

PLATINUM

GOLD

SILVER

BRONZE

There's no single route to becoming a Bicycle Friendly Community. In fact, the beauty of the BFC program is the recognition that no two communities are the same and each can capitalize on its own unique strengths to make biking better. But, over the past decade, we've pored through nearly 600 applications and identified the key benchmarks that define the BFC award levels. Here's a glimpse at the average performance of the BFCs in important categories, like ridership, safety and education.